

Brashy™

This is one seriously irreverent and turbulent font that's anything but bland. The in your face rawness of the brush strokes are somewhere between indifferent and confrontational. But don't let its free-wheelin' character deceive you - Brashy is much more cleverer and regimented than its uninhibited romping might imply. It's housebroken & better trained than a K-9 cop and is more flexible than a sideshow contortionist. So hit it!



Designed by ▶ Rob Keller
Format ▶ .PS OpenType
Styles ▶ 1 weight
Published ▶ 2014

I fit A4 & US Letter paper sizes
PRINT ME!
No need to scale!

Brashy's rowdiness gives off a rambunctious, hand-painted feel. Each character has 2-6 alternates that're all tied together with some awesome "random" OpenType code!!!

YEAH, THIS IS A
STORY OF A FAMOUS
DOG FOR THE DOG
THAT CHASES ITS
TAIL WILL BE DIZZY
THESE ARE CLAPPING
DOGS, RHYTHMIC
DOGS, HARMONIC
DOGS, HOUSE DOGS,
STREET DOGS. ☺

15pt

I was once called the worst audience participant Cirque du Soleil ever had.

18pt

I was once called the worst audience participant Cirque du Sol

22pt

I was once called the worst audience participant C

27pt

I was once called the worst audience par

33pt

I was once called the worst audien

40pt

I was once called the worst

48pt

I was once called the we

57pt

I was once called th

67pt

I was once called

78pt

I was once ca

Afrikaans, Albanian, Asu, Basque, Bemba, Bena, Bosnian, Catalan, Chiga, Congo Swahili, Cornish, Croatian, Czech, Danish, Dutch, English, Estonian, Faroese, Filipino, Finnish, French, Galician, Ganda, German, Gusii, Hungarian, Icelandic, Indonesian, Irish, Italian, Jola-Fonyi, Kabuverdianu, Kalenjin, Kinyarwanda, Latvian, Lithuanian, Luo, Luyia, Machame, Makhuwa-Meetto, Makonde, Malagasy, Malay, Maltese, Manx, Morisyen, North Ndebele, Norwegian Bokmål, Norwegian Nynorsk, Nyankole, Oromo, Polish, Portuguese, Romanian, Rombo, Rundi, Rwa, Samburu, Sango, Sangu, Sena, Shambala, Shona, Slovak, Slovenian, Soga, Somali, Spanish, Swahili, Swedish, Swiss German, Taita, Teso, Vunjo, Welsh, & Zulu + many more...

Zwariowataś?

Wyduje mi się, że mój styl to mroczny szyk

KARTÁČOVÁNÍ

Hogyan örült meg...

A mão versus o computador

Vahşi Batı

DIE GRÖßMÄULER

T
Th
The
The l
The le
The let
The lett
The lette
The letter
The letters
The letters c
The letters ch
The letters cha
The letters chan
The letters chang
The letters change
The letters change a
The letters change as
The letters change as y
The letters change as yo
The letters change as you
The letters change as you t
The letters change as you ty
The letters change as you typ
The letters change as you type
The letters change as you type!

Brashy's patent pending »Flippy Letters™« makes the letters automatically typeset themselves in an apparently random fashion. Newly typed letters will cause previously entered characters to change in unpredictable ways. Through this feature (contextual alternates), the handmade brushed style truly shines.

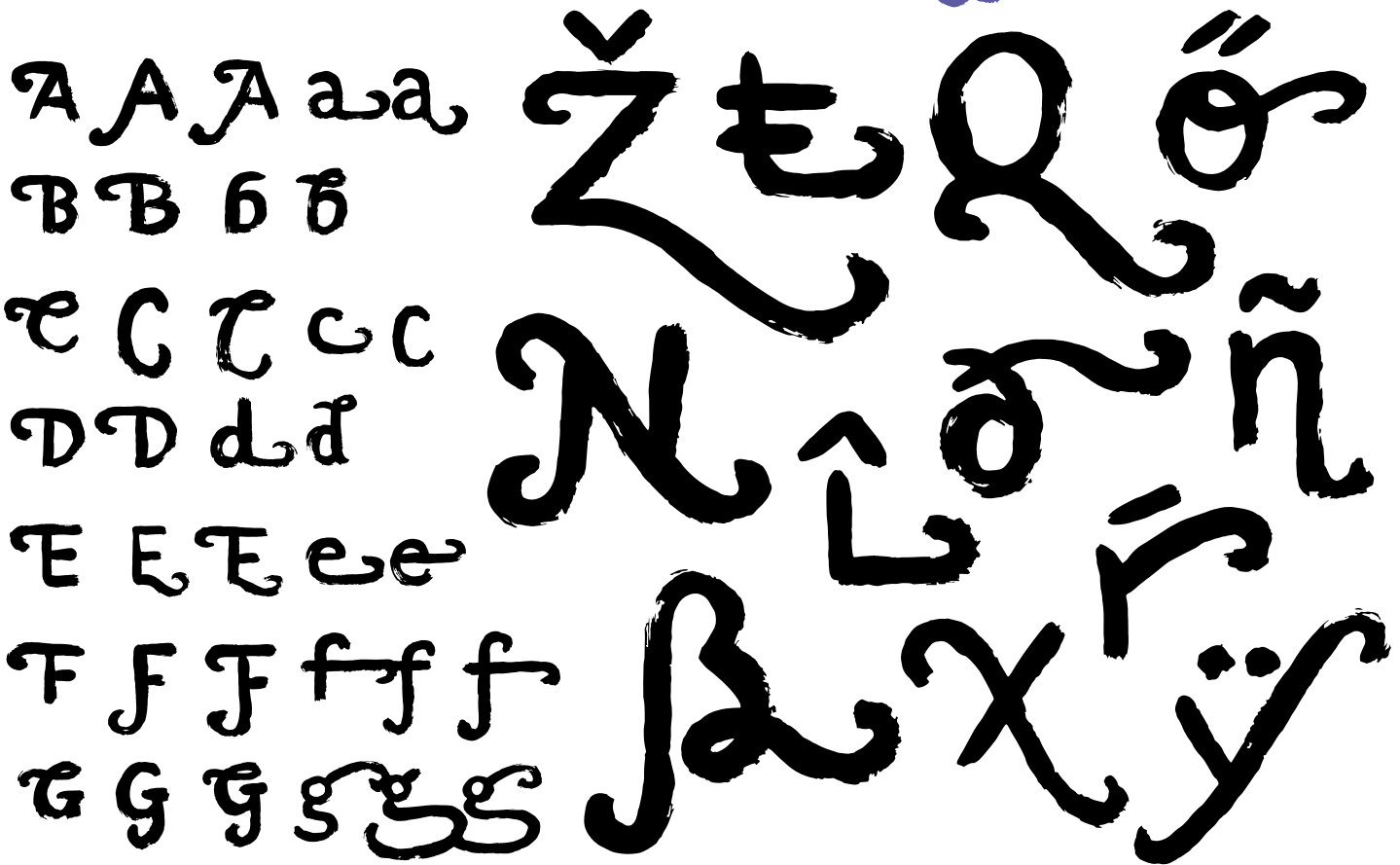
You can notice here, that with each new letter the previous letters change. However, due to complex OpenType lookup limitations, eventually the letters become "set" and no longer flip. The set letters begin to creep in at the bottom there and are illustrated in gray.



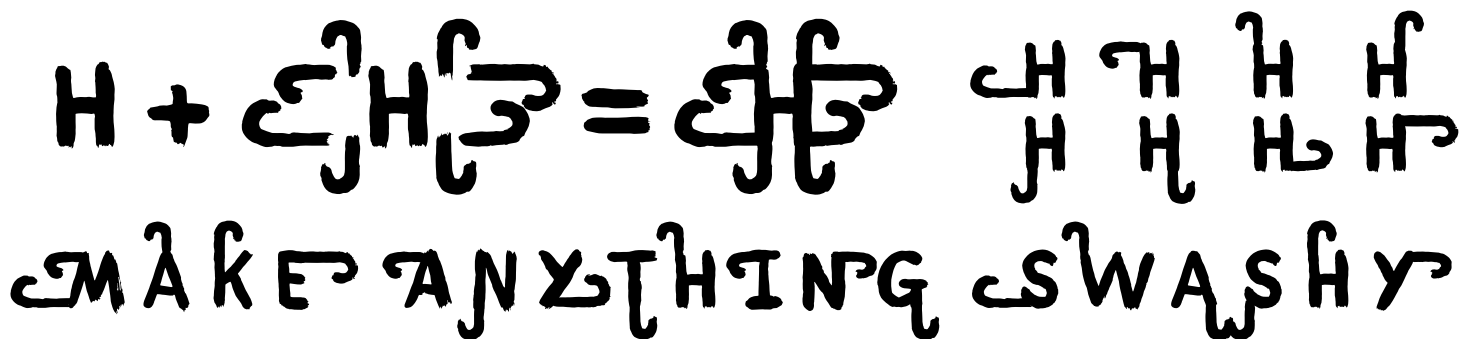
A serious portion of Brashy's giant character set is swash letters. The upper & lower case each have 2-4 alternate swashy versions. (Of course, all accented letters also

have funky swashes.) Additionally, there are several individual connecting flourishes that can be attached to any letter to create your own swashes. Yippie!!!

Pre-built Swashes

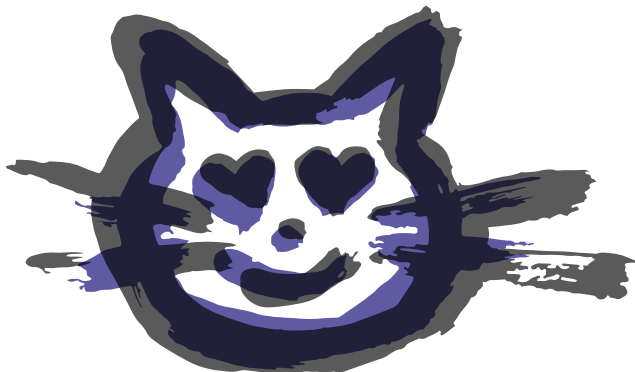
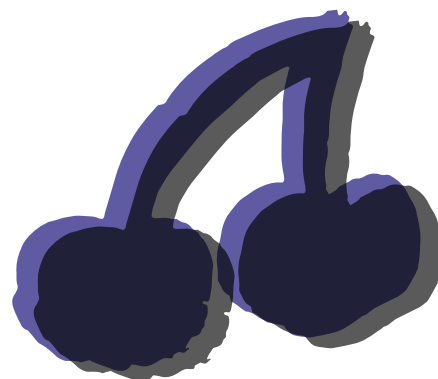
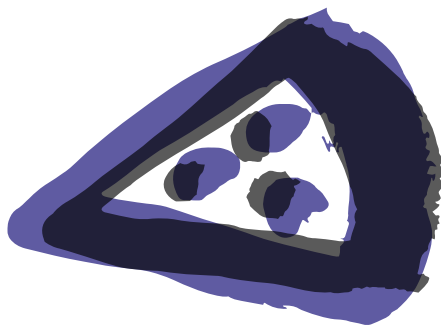
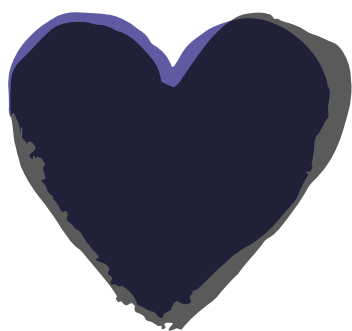


Connecting Flourishes



(Don't forget: With great power comes great responsibility.)

Order now and get sixty four dingbats, arrows, and symbols for free! There are two whole versions of each dingbat, for a grand total of 128 individual funky icons to play with and to texture your typesetting! ☀



Brashy Features + Stylistics Sets

9

frac 1 3/4 56/789 ▶ 1³/₄ 5⁶/₇₈₉

FRACTIONS

sup_s + sin_f H1234 + H5678 ▶ H¹²³⁴ + H₅₆₇₈

SUPERSCRIPT/SUPERIOR + SUBSCRIPT/INFERIOR

case (x-x) ¿qué? ▶ (X-X) ¿QUÉ?

CASE SENSITIVE ALTERNATES

ordn 1a 2o ▶ 1^a 2^o

ORDINALS

liga + dlig fi fl + ct st ▶ fi fl + ct st

LIGATURES + DISCRETIONARY LIGATURES

swsh Aa Bb Yy Zz ... ▶ Aa Bb Yy Zz ...

SWASHES = EVERYTHING BECOMES SWASHES (USE WITH CAUTION)

ss01 01234 & ▶ 01234 &t

STYLISTIC SET 1 → ALTERNATE ONE AND AMPERSAND

ss02 01234 ▶ 01234

STYLISTIC SET 2 → ALTERNATE CLOSED TWO

ss03 aāäǻæ... gǧǧǧ ▶ aāäǻæ... gǧǧǧ

STYLISTIC SET 3 → ALTERNATE LOWERCASE A AND G

ss04 & ∴ ▶ & ?

STYLISTIC SET 4 → ANOTHER ALTERNATE AMPERSAND AND ALTERNATE INTERROBANG

ss05 😊 😊 😞 😞 ▶ 😊 😊 😞 😞

STYLISTIC SET 5 → ALTERNATE SMILY FACE

ss06 + ss08 *** + *** ▶ *** + ***

STYLISTIC SET 6 + 8 → ALTERNATE SIX AND EIGHT POINTED ASTERISK

ss07 56789 ▶ 56789

STYLISTIC SET 7 → ALTERNATE NUMBER SEVEN

ss09 Swash Swag ▶ Swash Swag

STYLISTIC SET 9 → FIRST + LAST LETTER SWASHES

ss10 01234 ▶ 01234

STYLISTIC SET 10 → ANOTHER ALTERNATE ONE (GERMAN STYLE)

Rock on!

↳ Made in Berlin

BUY
ME
NOW!

↳ Exclusively from:

www.motaitalic.com